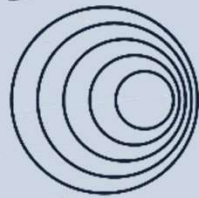




2025



**BUCKEYE PARTNERS**

*Customer Conference*

# Control Center



# Lehigh Valley Control Center



**BUCKEYE PARTNERS**

**2025**

*Customer Conference*

# Buckeye Partners L.P

## Control Center Operations





BUCKEYE PARTNERS

2025

*Customer Conference*

# Buckeye Control Centers

- Lehigh Valley, Pennsylvania (11 operating consoles)
  - Buckeye-owned lines
  - Joint ventures
- Mont Belvieu, Texas (7 operating consoles)
  - Buckeye-owned lines
  - Provides contract operations and Control Center services for 3<sup>rd</sup> party operators (BDL)



BUCKEYE PARTNERS

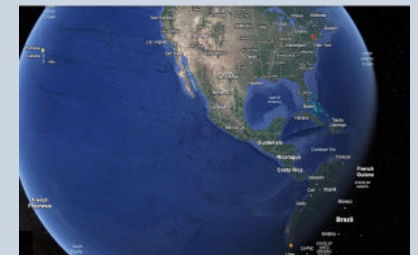
2025

*Customer Conference*

# Buckeye Control Centers

## By the numbers

- 5000 Miles of pipeline (from here to Honolulu, Hawaii or Lima Peru)
- Total Alarms in 2024: 421,981
  - Critical 51,543
  - High 94,025
  - Medium 146,210
  - Low 130,203





# Buckeye Control Center

By the numbers in 2024

Item	Count of
<b>Commands Issued</b>	<b>451,934</b>
<b>Phone calls</b>	<b>110,985</b>
<b>Minutes on the phone</b>	<b>117,530</b>
<b>Tickets made</b>	<b>61,233</b>

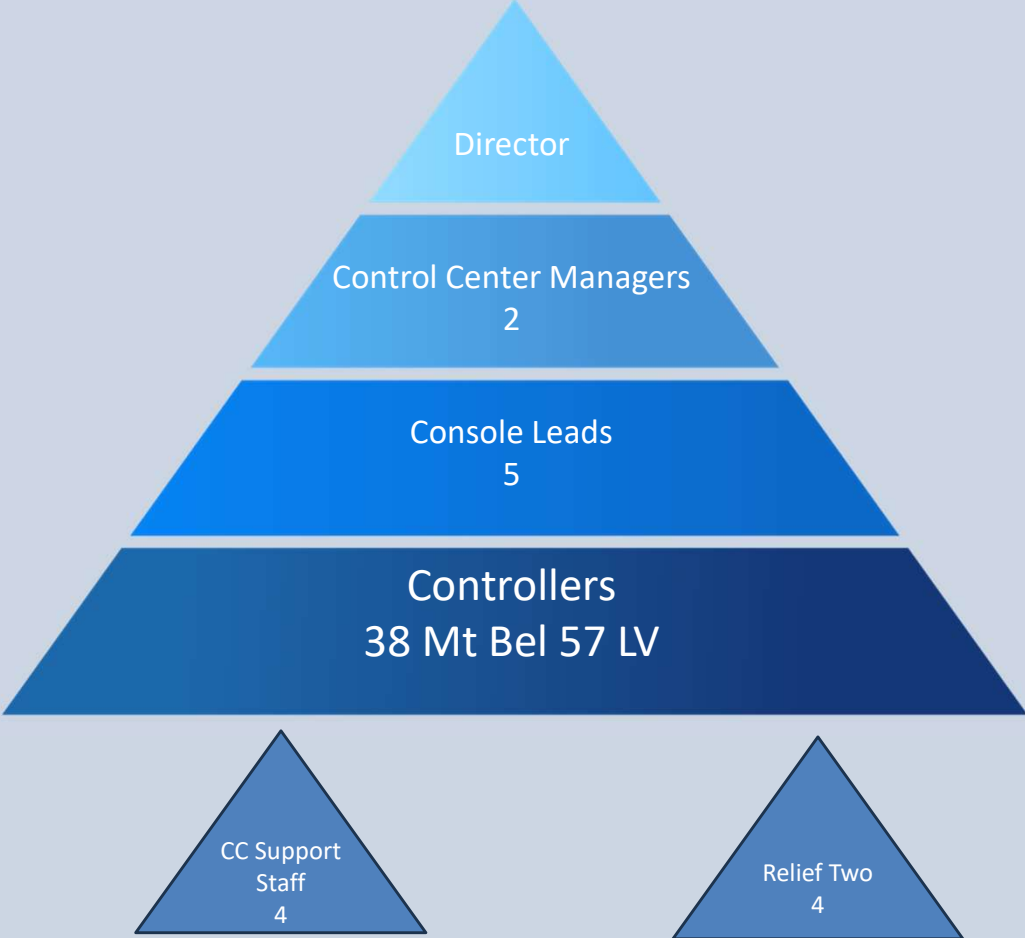


**BUCKEYE PARTNERS**

**2025**

*Customer Conference*

# Structure of the Control Center





BUCKEYE PARTNERS

2025

*Customer Conference*

# Pipeline System Controller Responsibilities

Communicating with:

- Scheduling team
- Field Operations
- 3<sup>rd</sup> Party delivery locations
- Supervisor





BUCKEYE PARTNERS

2025

*Customer Conference*

# Pipeline System Controller Responsibilities

Operating:

- Pumps and valves
- Utilize running orders to make product movements
- Make batch changes between products
- Ensure correct product goes to the correct place





BUCKEYE PARTNERS

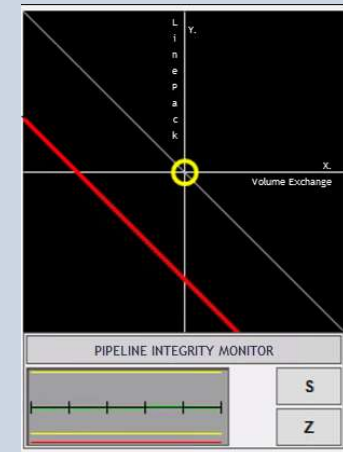
2025

*Customer Conference*

# Pipeline System Controller Responsibilities

## Monitoring:

- Leak detection system (Visit us tomorrow at the trade show booth)
- Monitoring pressures to ensure we stay within limits
- Product movement through the pipeline
- Safety alarms on the pipelines and terminals





BUCKEYE PARTNERS

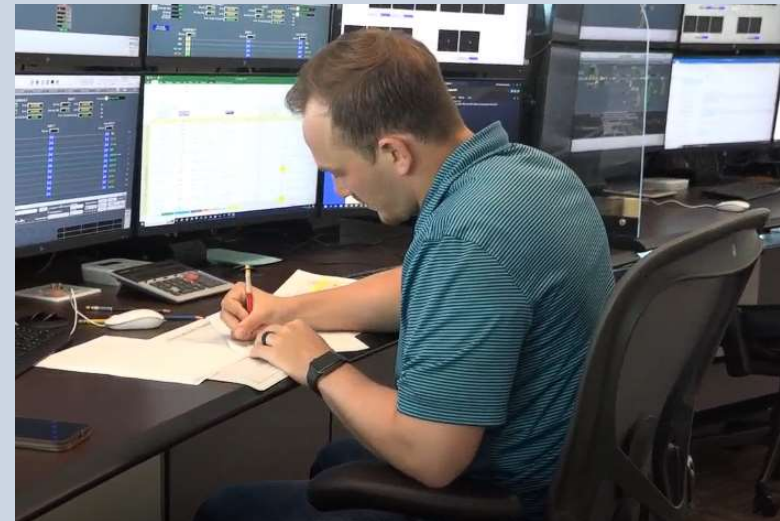
2025

*Customer Conference*

# Pipeline System Controller Responsibilities

## Accounting:

- Responsible for keeping track of ticket amounts
- Monitor meter factors for correct measurement
- Maintain daily inventory on the pipeline





BUCKEYE PARTNERS

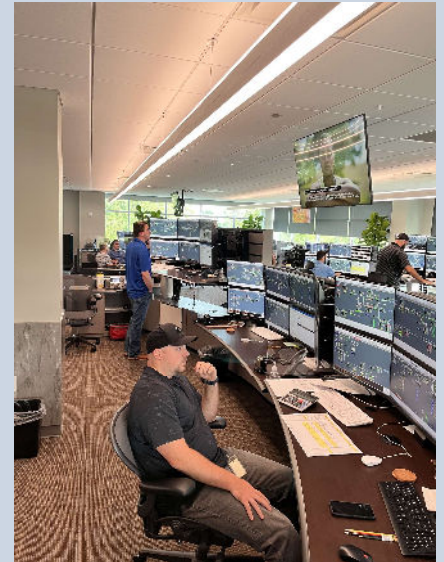
2025

*Customer Conference*

# Pipeline System Controller Responsibilities

## Reporting:

- Scheduling team on status of line
- Issues on the line
- Updating customers on delivery times and amounts





BUCKEYE PARTNERS

2025

*Customer Conference*

# Fatigue Mitigation

- Fatigue Mitigation
  - Schedule
  - Sit Stand consoles
  - Exercise equipment
  - Hours of service
  - Other fatigue mitigation factors
  
- Why Fatigue Mitigation factors matter?



# Fatigue Mitigation



# Upsets to the Community

What does the shipping community consider an upset?

- Lack of or poor communications
- Incorrect product or not all of product
- Timing on (or incorrect) linefill
- Abnormal Operating Event (AOE) – including power or communication outage and closed valve
- Tank Issues (no room or high tank alarm AOE)
- Contamination
- Leak or suspected leak



**BUCKEYE PARTNERS**

**2025**

*Customer Conference*

# What does an Upset look and sound like?



# Consequences to the Community when there are upsets

What are the consequences to upset conditions?

- Batch will show up early or late depending on upset (cascading issue)
- May need to have another tank ready to accommodate other product
- Delay (potential fees) TZ1
- Locked out from pumping
- Pressure Cycling (paper clip)



BUCKEYE PARTNERS

2025

*Customer Conference*

**TZ1** Not sure I understand this? Not saying it's wrong - I just don't understand the correlation here.

Zeth, Thomas R., 2025-06-14T16:36:50.488



BUCKEYE PARTNERS

2025

*Customer Conference*

# Pressure Cycling

- Pressure cycling is a measurement of the repetitive stress that a pipeline experiences through operation.
- Can have an adverse effect on manufacturing defects present in the line.
- Lines that experience more aggressive pressure cycling are at higher risk for seam failure.
- Large cycles are more damaging than small cycles.
- Caused by pump startup and shutdown, upset conditions, increasing or decreasing pressure of the line.

DESIGN  
EXPANDED  
EXPERIENCE  
MARKET  
CREATIVE  
PARTNERS  
ASSESSMENTS  
COMMUNICATION  
TEAM  
DEVELOPMENT  
LEADERSHIP  
PROGRESS  
SHAKE  
INSPIRE  
EXCHANGE  
STRATEG  
**COLLABORATION**  
CUSTOMER  
COOPERATION  
ALLIANCE  
SUPPORT  
FUTURE  
INNOVATION  
COLLECTIVE  
SAVINGS  
SUCCESS  
STRENGTH  
TRANSPARENCY  
RESOURCES  
EFFICIENCIES  
AMBITIOUS  
GROWTH  
NETWORKING  
TRUST  
PROBLEM SOLVING  
SKILLS  
BRAINSTORM  
CONNECTIONS  
INTERACTION



**BUCKEYE PARTNERS**

**2025**

*Customer Conference*

**Any Feedback for our Team?**

---



# Contact us



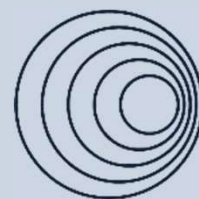
484-357-5915



bhausknecht@buckeye.com



www.buckeye.com



**BUCKEYE** PARTNERS